

HOW TO RECEIVE YOUR RENTAL LYRE?

1 – PROGRAMMATION

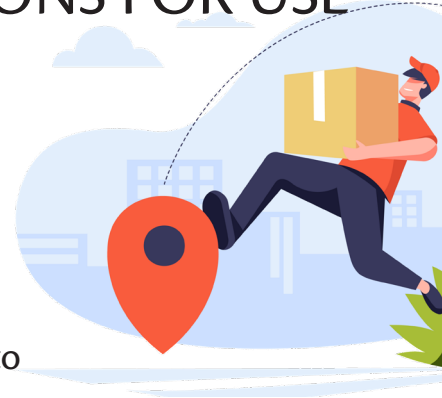
After receiving your order, we will send your rental lyre to the address you provided, and you will receive your package within 5 business days from the start of your rental period. Once the instrument is packed and ready for departure, you will receive a confirmation email with tracking numbers for the shipment. You will also receive 3 attached photos of the instrument, confirming its good condition before shipping.

2 – RECEIPT OF THE INSTRUMENT + PHOTOS

Upon receipt of the instrument, please send us 3 photos of the instrument by email (contact@lyre-academy.com) to attest to its good condition upon receipt. Please also report any damages observed on the packaging or the instrument. Keep the cardboard box carefully for future use upon return.

3 – BONUS!

Upon receipt of the instrument, please send us your feedback by email (contact@lyre-academy.com), we are always happy to hear positive feedback! Send us a photo of yourself with your instrument and leave a review on our website to receive a complimentary tablature!



Enjoy!